

CONTRACT PLANS COMPONENTS

- ROADWAY PLANS
- SIGNING AND PAVEMENT MARKING PLANS
- LIGHTING PLANS
- LANDSCAPE PLANS
- UTILITY PLANS
- STRUCTURAL PLANS



PASCO COUNTY

CONTRACT PLANS

N. SUNLAKE BOULEVARD
 PHASE 1 - SEGMENT 3
 STA. 139+00.00 TO STA. 186+16.43
 PASCO COUNTY, FLORIDA

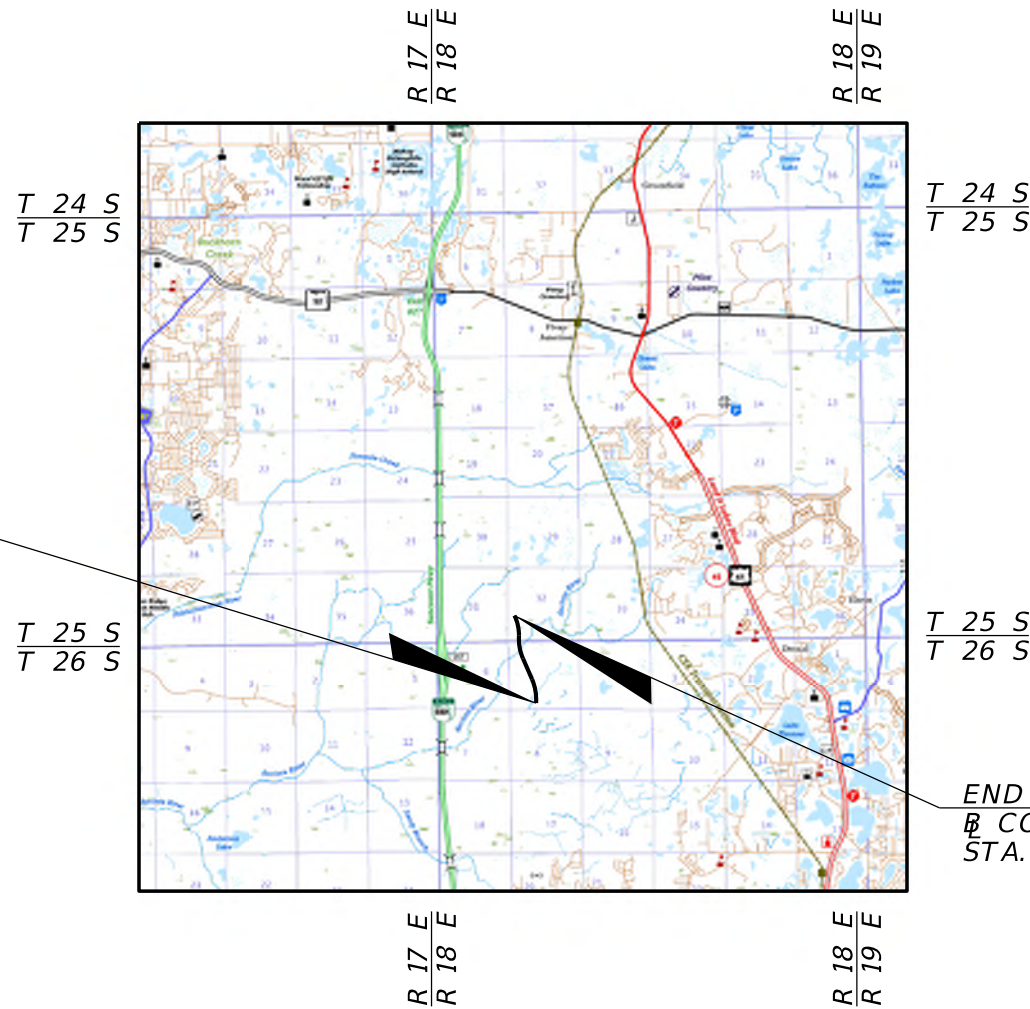
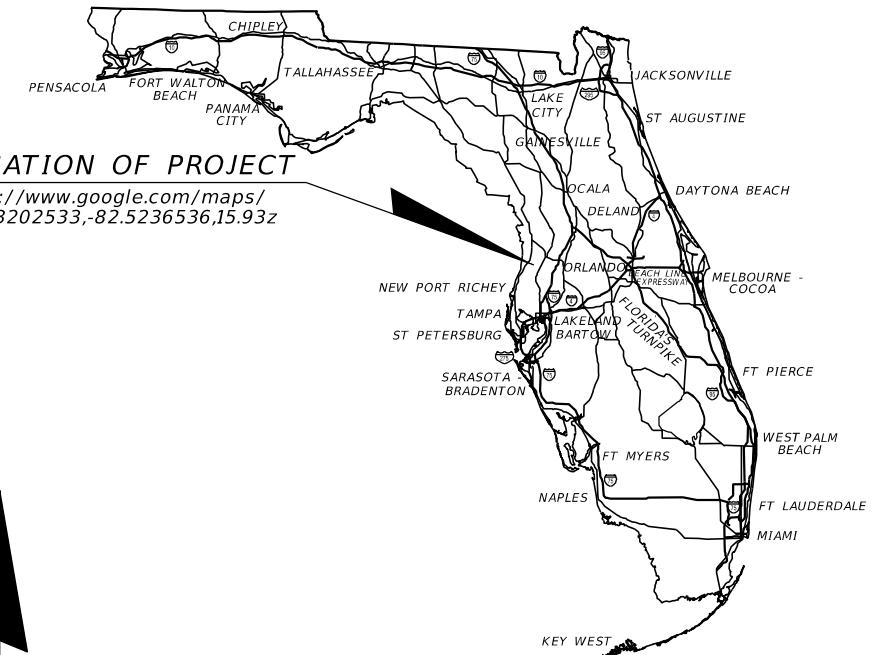
PREPARED FOR:
 PASCO COUNTY ENGINEERING SERVICES DEPARTMENT

INDEX OF ROADWAY PLANS

SHEET NO.	SHEET DESCRIPTION
1	KEY SHEET
2	SIGNATURE SHEET
3	SUMMARY OF PAY ITEMS
4 - 6	DRAINAGE MAP
7 - 8	TYPICAL SECTION
9 - 10	TYPICAL DETAILS
11	SUMMARY DRAINAGE STRUCTURES
12 - 14	PROJECT LAYOUT
15	CURVE DATA TABLE
16	GENERAL NOTES
17 - 23	ROADWAY PLANS
24 - 31	ROADWAY PROFILES
32	GRADING DETAIL
33 - 40	DRAINAGE STRUCTURES
41 - 45	DRAINAGE DETAILS
46 - 48	POND DETAIL
49	ROADWAY SOIL SURVEY
50 - 74	CROSS SECTIONS
75 - 76	DRIVEWAY DETAILS
77 - 78	STORMWATER POLLUTION PREVENTION PLAN
79 - 81	EROSION CONTROL SHEET
82	HAUL ROUTE TYPICAL DETAILS
83 - 89	HAUL ROUTE SHEET LAYOUT
90 - 91	HAUL ROUTE CURVE DATA TABLE
92 - 97	HAUL ROUTE PLAN
98	HAUL ROUTE GENERAL NOTES
99 - 100	FGT ACCESS DETAIL
101	SURVEY OF VERIFIED UTILITIES

LOCATION OF PROJECT

<https://www.google.com/maps/@28.3202533,-82.5236536,15.93z>



BEGIN PROJECT
 CONST. N. SUNLAKE BLVD.
 STA. 139+00.00

END PROJECT
 CONST. N. SUNLAKE BLVD.
 STA. 186+16.43

GOVERNING STANDARD PLANS:

Florida Department of Transportation, FY2019-20 Standard Plans for Road and Bridge Construction and applicable Interim Revisions (IRs).

Standard Plans for Road Construction and associated IRs are available at the following website: <http://www.fdot.gov/design/standardplans>

Standard Plans for Bridge Construction are included in the Structures Plans Component

GOVERNING STANDARD SPECIFICATIONS:

Florida Department of Transportation, July 2019 Standard Specifications for Road and Bridge Construction at the following website: <http://www.fdot.gov/programmanagement/Implemented/SpecBooks>

PASCO COUNTY BOARD OF COUNTY COMMISSIONERS

- DISTRICT 1: RON OAKLEY
- DISTRICT 2: MIKE MOORE
- DISTRICT 3: KATHRYN STARKEY
- DISTRICT 4: MIKE WELLS
- DISTRICT 5: JACK MARIANO
- COUNTY ADMINISTRATOR: DAN BILES

ROADWAY PLANS

ENGINEER OF RECORD:

DALE LEE DOWDEN, P.E. NO. 46582
 WGI, INC.
 3111 W. DR. MARTIN LUTHER KING JR. BLVD.,
 SUITE 375, TAMPA, FLORIDA 33607
 (561) 687-2220
 LB NO. 7055
 VENDOR NO. 65-0271367

COUNTY PROJECT MANAGER:

PANOS KONTSES

SHEET NO.

1