

CONTRACT PLANS COMPONENTS

- ROADWAY PLANS
- SIGNING AND PAVEMENT MARKING PLANS
- LIGHTING PLANS
- LANDSCAPE PLANS
- UTILITY PLANS
- STRUCTURAL PLANS



PASCO COUNTY

CONTRACT PLANS

**N. SUNLAKE BOULEVARD
PHASE 1 - SEGMENT 2
STA. 186+16.43 TO STA. 331+56.20
PASCO COUNTY, FLORIDA**

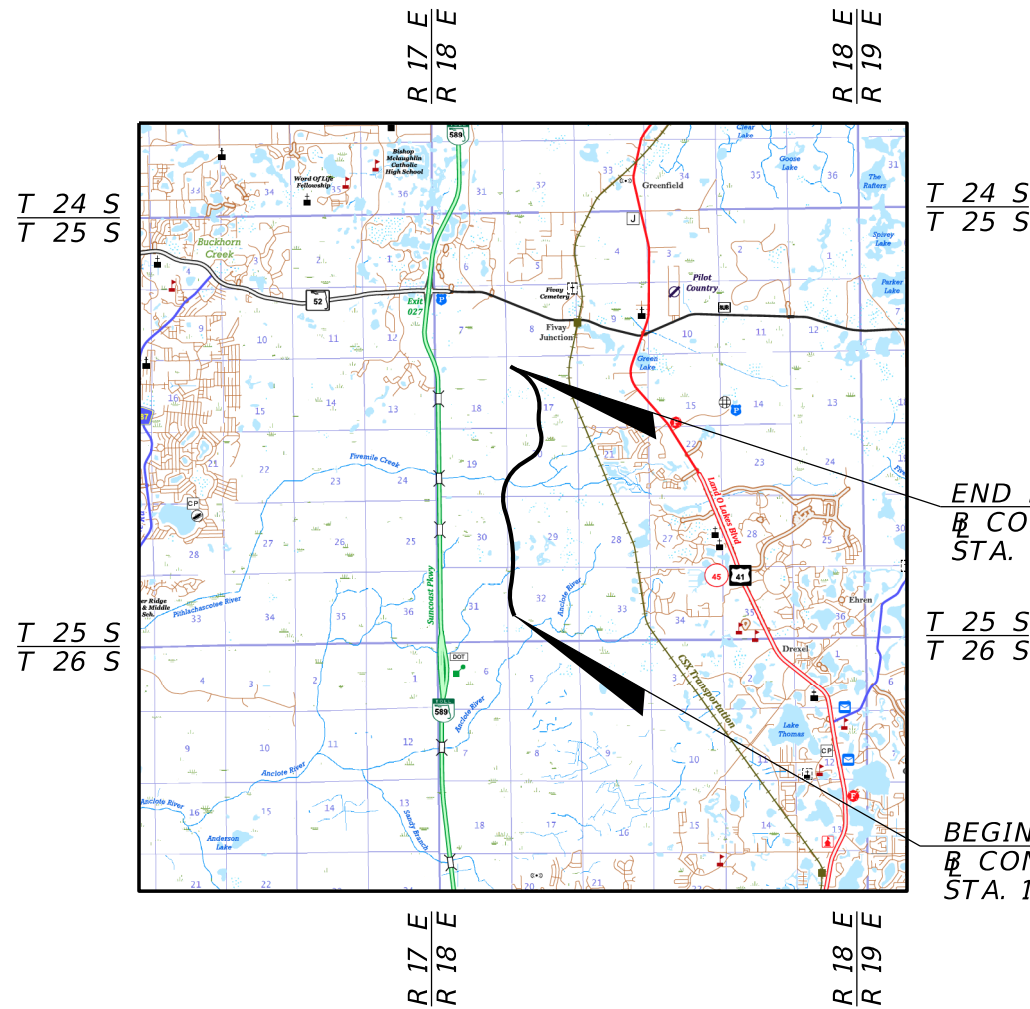
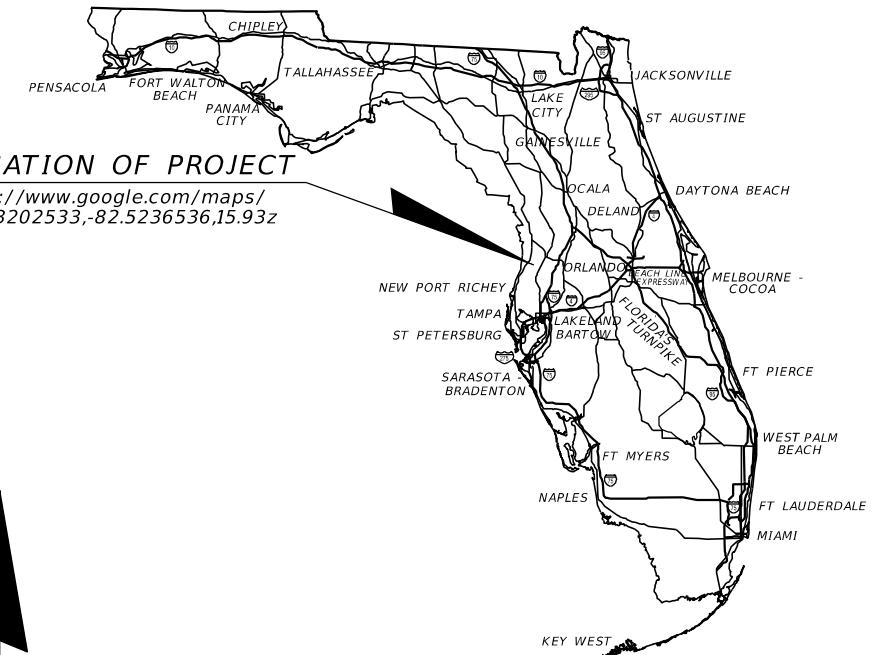
INDEX OF ROADWAY PLANS

SHEET NO.	SHEET DESCRIPTION
1	KEY SHEET
2	SIGNATURE SHEET
3	SUMMARY OF PAY ITEMS
4 - 9	DRAINAGE MAP
10 - 11	TYPICAL SECTION
12 - 14	TYPICAL DETAILS
15	GRAVITY WALL DETAILS
16 - 19	SUMMARY OF DRAINAGE STRUCTURES
20	GENERAL NOTES
21 - 26	PROJECT LAYOUT
27	CURVE DATA TABLE
28 - 51	ROADWAY PLANS
52 - 73	ROADWAY PROFILES
74	GRADING DETAIL
75 - 108	DRAINAGE STRUCTURES
109 - 115	DRAINAGE DETAILS
116 - 123	POND DETAILS
124	ROADWAY SOIL SURVEY
125 - 207	CROSS SECTIONS
208 - 209	DRIVEWAY DETAIL
210 - 211	STORMWATER POLLUTION PREVENTION PLAN
212 - 218	EROSION CONTROL SHEETS
219	HAUL ROUTE TYPICAL DETAILS
220	HAUL ROUTE GENERAL NOTES
221 - 227	HAUL ROUTE SHEET LAYOUT
228 - 229	HAUL ROUTE CURVE DATA TABLE
230 - 235	HAUL ROUTE PLAN
236 - 237	FGT DETAIL
238	SURVEY OF VERIFIED UTILITIES

PREPARED FOR:
PASCO COUNTY ENGINEERING SERVICES DEPARTMENT

LOCATION OF PROJECT

<https://www.google.com/maps/@28.3202533,-82.5236536,15.93z>



GOVERNING STANDARD PLANS:

Florida Department of Transportation, FY2019-20 Standard Plans for Road and Bridge Construction and applicable Interim Revisions (IRs).

Standard Plans for Road Construction and associated IRs are available at the following website: <http://www.fdot.gov/design/standardplans>

Standard Plans for Bridge Construction are included in the Structures Plans Component

GOVERNING STANDARD SPECIFICATIONS:

Florida Department of Transportation, July 2019 Standard Specifications for Road and Bridge Construction at the following website: <http://www.fdot.gov/programmanagement/Implemented/SpecBooks>

END PROJECT
B CONST. N. SUNLAKE BLVD.
STA. 331+56.20

BEGIN PROJECT
B CONST. N. SUNLAKE BLVD.
STA. 186+16.43

**PASCO COUNTY BOARD
OF COUNTY COMMISSIONERS**

- DISTRICT 1: RON OAKLEY
- DISTRICT 2: MIKE MOORE
- DISTRICT 3: KATHRYN STARKEY
- DISTRICT 4: MIKE WELLS
- DISTRICT 5: JACK MARIANO
- COUNTY ADMINISTRATOR: DAN BILES

ROADWAY PLANS

ENGINEER OF RECORD:

DALE LEE DOWDEN, P.E. NO. 46582
WGI, INC.
3111 W. DR. MARTIN LUTHER KING JR. BLVD.,
SUITE 375, TAMPA, FLORIDA 33607
(561) 687-2220
LB NO. 7055
VENDOR NO. 65-0271367

COUNTY PROJECT MANAGER:

PANOS KONTSES

SHEET NO.

1