

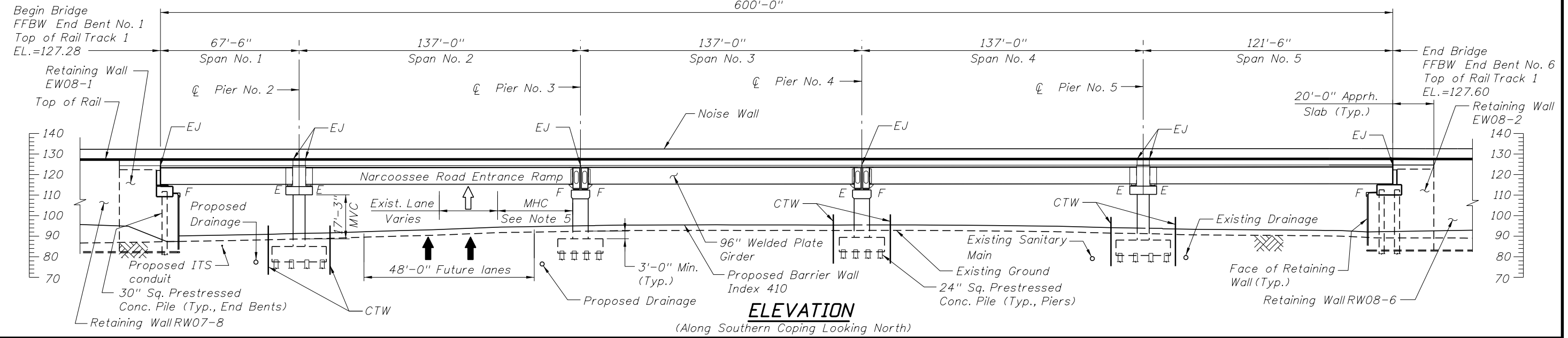
PLAN

NOTES:

1. For disposition of existing utilities, see Utility Adjustment Plans.
2. Bridge Construction Sequence shall be coordinated with Traffic Control Plans.
3. For Vertical Curve Data and Roadway information, see GEOMETRIC DATA sheet.
4. Existing fence to be temporarily removed during construction and restored to existing condition. Temporary fencing to be provided during construction to close the gap created by removing existing fencing.
5. For existing and future MHC, refer to table on GEOMETRIC DATA sheet.

LEGEND:

- ⊙ = Approximate Location of Standard Penetration Test (SPT) Boring
- FFBW = Front Face of Backwall
- MVC = Minimum Vertical Clearance
- MHC = Minimum Horizontal Clearance
- E = Expansion Bearing
- F = Fixed Bearing
- EJ = Expansion Joint
- CTW = Critical Temporary Wall
- ↑ = Future Lanes
- ⬆ = Existing Lanes



ELEVATION

(Along Southern Coping Looking North)

| REVISIONS | | | | | |
|-----------|----|-------------|------|----|-------------|
| DATE | BY | DESCRIPTION | DATE | BY | DESCRIPTION |
| | | | | | |

HNTB
 HNTB CORPORATION
 610 CRESCENT EXECUTIVE CT
 SUITE 400
 LAKE MARY, FL 32746
 (407) 805-0355
 CERT. OF AUTH. NO. 6500

ENGINEER OF RECORD: Christopher J. Mills
 PE: # 56801

DRAWN BY: JTC
 CHECKED BY: EAJ
 DESIGNED BY: CJM
 CHECKED BY: ENS

ALL ABOARD FLORIDA

| | | |
|--------------|-----------|--------|
| AAF CONTRACT | MILEPOST | COUNTY |
| C02 | EW 104.94 | ORANGE |

SHEET TITLE:
**PLAN AND ELEVATION
 BR-EW08-104.94 SR 528 NARCOOSSEE ROAD ENTRANCE RAMP**

PROJECT NAME:
**NEW RAILWAY
 ORLANDO INT'L AIRPORT (MP 98.54) TO FEC RAILWAY (MP 137.58)**

SHEET NO.:
EW08-1

NOTICE: THE OFFICIAL RECORD OF THIS SHEET IS THE ELECTRONIC FILE DIGITALLY SIGNED AND SEALED UNDER RULE 61G15-23.004, F.A.C.